

SmartSights

WIN-911 Failover Utility

Failover Guide

Failover Utility Terms

Primary System: The default WIN-911 System that normally handles alarm notification processing.

Secondary System: The backup WIN-911 System that takes over alarm notification when the primary is unavailable.

Active: The default mode of operation where the WIN-911 System conducts alarm notifications.

Standby: The mode of operation where the WIN-911 System monitors data sources for alarm activity but does not conduct alarm notifications.

Activate: The process of changing the selected system from Standby to Active.

Deactivate: The process of changing the selected system from Active to Standby.

Failover: The process of switching the active WIN-911 System from a waiting, standby WIN-911 system, when the Primary system becomes unavailable for conducting alarm notification.

Manual Failover: The WIN-911 Administrator conducts failover by selecting the Activate and Deactivate toggles.

Automatic Failover: The Failover module conducts failover activity based on conditions that indicate the active WIN-911 has stopped functioning as defined by its Status module.

WIN-911 Failover Utility Introduction

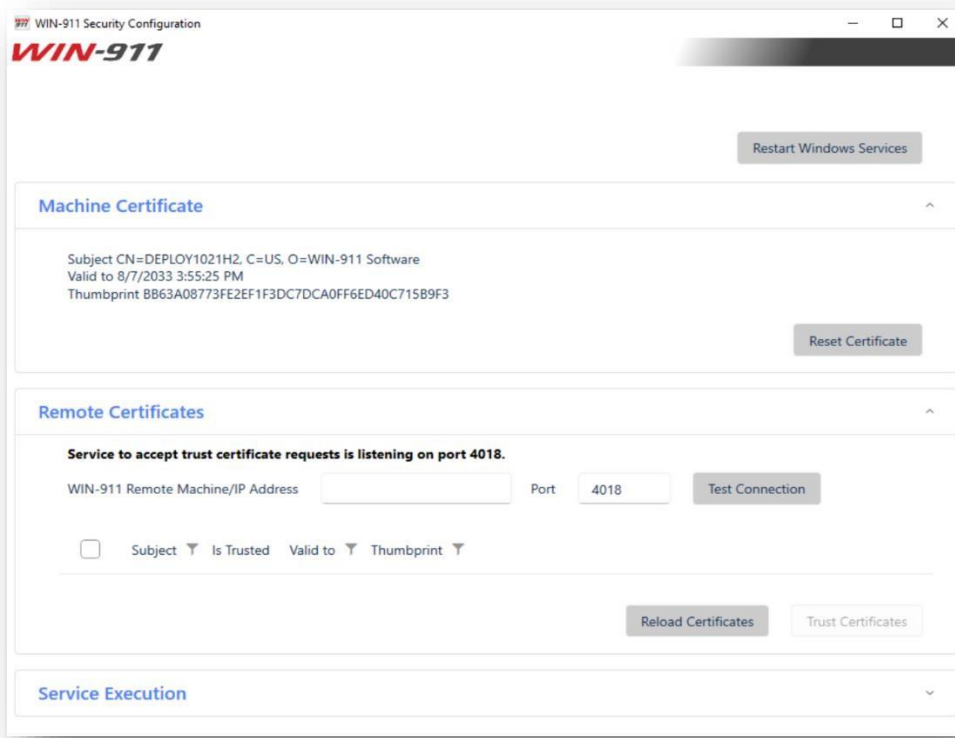
The WIN-911 Failover Utility manages which of two WIN-911 Systems is actively conducting alarm notifications and which one is on standby, ready to take over when conditions require. The Primary system, by default, will be "Active" and the Secondary system will be in "Standby" mode during normal operations. Upon a disruption to normal operations, the Failover Utility can be configured to automatically activate the Secondary and can automatically deactivate it when conditions improve. The WIN-911 Failover Utility can be deployed on a WIN-911 host or a third-party system to isolate it from impairing conditions affecting the Primary and Secondary.

Status Module

The failover utility requires that the Status module be installed on both the Primary and Secondary WIN-911 systems. The status modules inform the Failover Utility of the operating conditions of the individual systems, and this information is used by the utility to trigger Failover activity. Each Status module can be configured within WIN-911 workspace on its system.

Security Configuration Utility

Use the WIN-911 Security Configuration to trust certificates between each machine that will communicate - each of the WIN-911 Systems and the Failover Utility host.



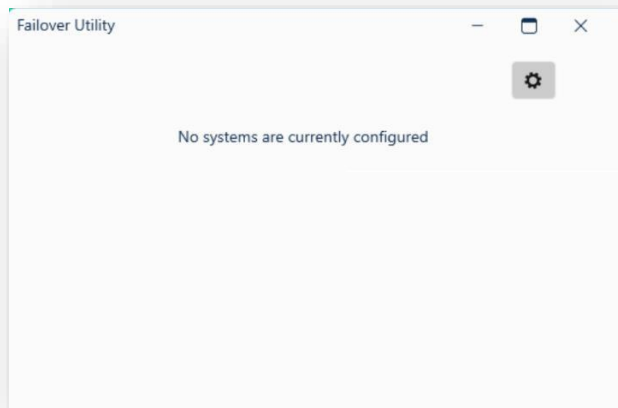
Once trust is established between all system the WIN-911 Failover utility is ready to communicate.

Installation Path

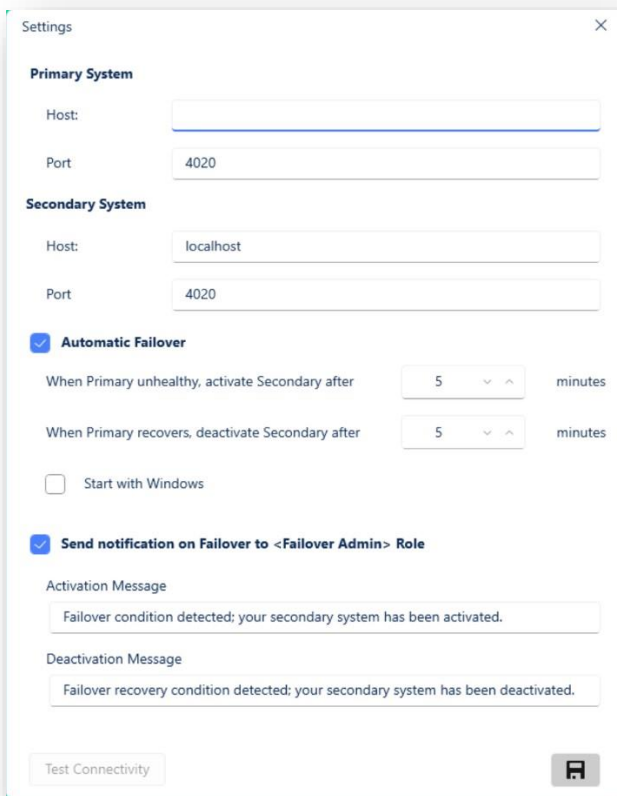
WIN-911 Failover installer will install files in the following location: %PROGRAMFILES(X86)%\WIN-911 Software\Failover.

Failover Utility Configuration

Select Start > WIN-911 > Failover Utility



Click on the settings button (Gear) to configure the utility.



Define WIN-911 Systems

Enter the hostname (or IP address) and corresponding Port numbers of the Primary and Secondary Systems.

Automatic or Manual Failover

Select the checkbox for Automatic Failover mode (Default). Then specify the amount of time an unhealthy condition must persist to trigger an Automatic Failover. Likewise, specify the time a recovery condition must persist before reactivating the Primary and deactivating the Secondary.

In Automatic mode, the Activate/Deactivate toggles will be disabled.

Unselect the checkbox for Manual Failover mode.

In Manual mode, the Activate/Deactivate toggles will be enabled.

Specify Failover Utility Start Mode

Select the 'Start with Windows' checkbox to have the Failover Utility automatically start with the operating system.

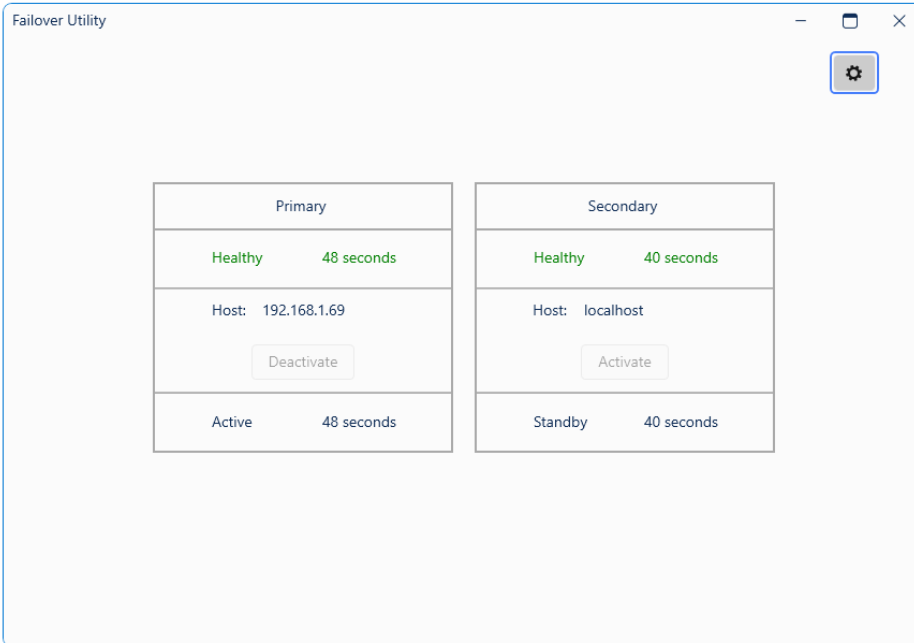
Alert People of Failover Activity

You can alert people to Failover activity by assigning the Failover Role to Contacts in your WIN-911 Directory.

Test Connectivity

Select Test Connectivity to ensure the Failover Utility can communicate with both Primary and Secondary WIN-911 Systems. Proper connectivity requires all parties to have network access and certificates that have been properly trusted.

Failover Utility Workspace



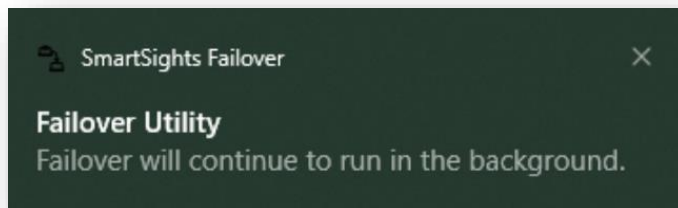
The screenshot shows the Failover Utility workspace with two columns: Primary and Secondary. Each column displays the current status, health, and time to next action.

Primary	Secondary
Healthy 48 seconds	Healthy 40 seconds
Host: 192.168.1.69	Host: localhost
Deactivate	Activate
Active 48 seconds	Standby 40 seconds

The Failover Utility Workspace presents the Primary and Secondary System summary which includes health, address or computer name, and mode of operation (Active or Standby). When the utility is set for Manual Failover, the Activate/Deactivate toggles are enabled.

Failover Utility Shutdown

The user can close the Failover Utility workspace by selecting the close option in the upper right. This will remove the workspace but the utility will continue to run in the background.



To shut down the Failover Utility you must right-click the icon and select "Exit."