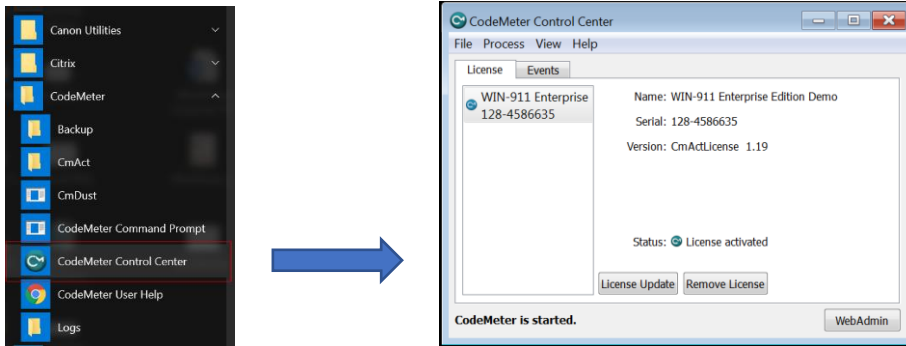
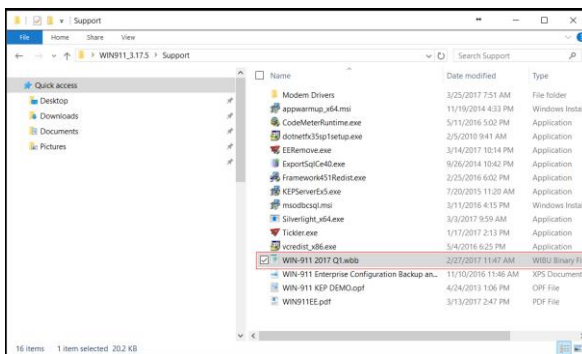


## Requesting a New License for WIN-911 3.17.5 (and newer)

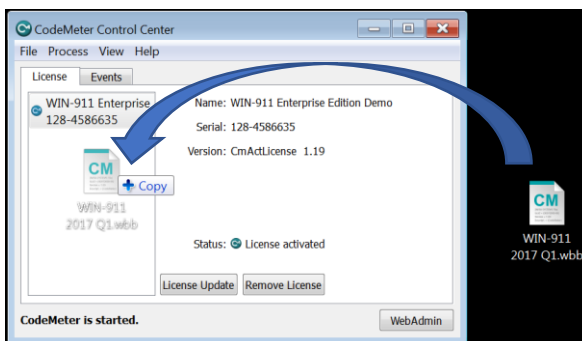
1. In the Start Menu, find the **CodeMeter** folder, then open **CodeMeter Control Center**. Leave the CodeMeter window on the screen.



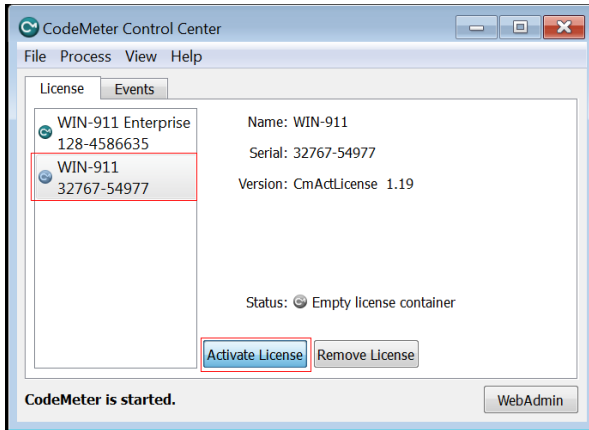
2. Open **WIN911\_3.17.xx** folder, then open the **Support** folder. In the Support folder find the WIBU License container – **WIN-911 2017 Q1.wbb**.



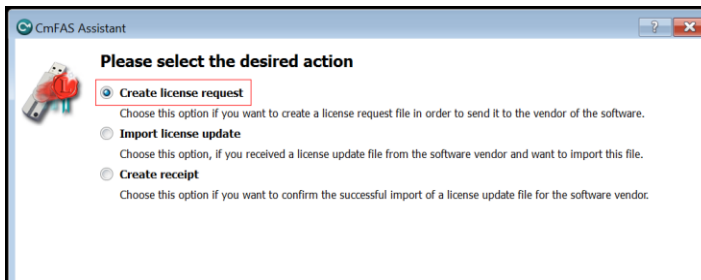
3. Drag and drop **WIN-911 2017 Q1.wbb** file into CodeMeter Control Center.



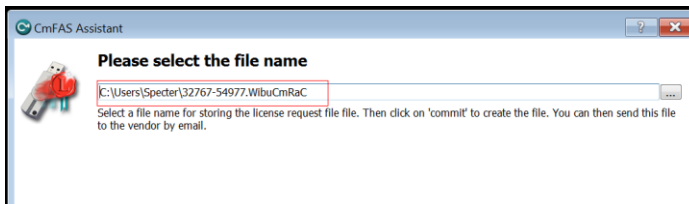
4. You will now see the empty WIN-911 License Container. Select the **WIN-911** container, then click **Activate License**.



5. Click **Next**, then select **Create License Request**.



6. Make note of the location of the request file. By default, it will be in **C:\Users\[local user]** folder.



7. Email the **\*.WibuCmRaC** file.